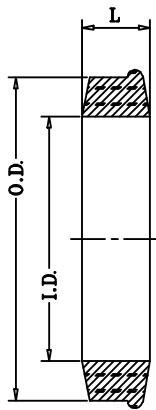


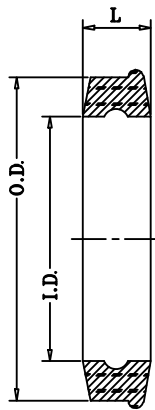
THIS DOCUMENT IS THE PROPERTY OF AMERICAN COMPLETION TOOLS, INC. AND IS AN UNPUBLISHED WORK FULLY PROTECTED BY THE UNITED STATES COPYRIGHT LAWS. THIS DOCUMENT CONTAINS PROPRIETARY AND CONFIDENTIAL INFORMATION OF AMERICAN COMPLETION TOOLS, INC. IT IS LOANED IN CONFIDENCE WITH THE UNDERSTANDING THAT WITHOUT PRIOR WRITTEN CONSENT OF AMERICAN COMPLETION TOOLS, INC. IT IS NOT TO BE REPRODUCED NOR USED FOR ANY PURPOSE EXCEPT THAT FOR WHICH IT IS LOANED. THE INFORMATION CONTAINED HEREIN IS NOT TO BE TRANSMITTED TO ANOTHER AND IT SHALL BE RETURNED ON DEMAND.

DRAWING NUMBER REV: 0

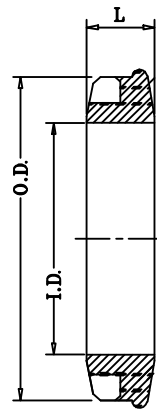
HUR465M008



PROFILE 'A'



PROFILE 'B'



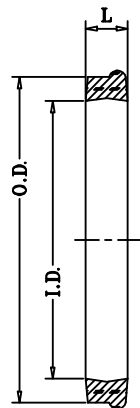
PROFILE 'C'

SR. NO.		O.D.	I.D.	USE FOR ASSLY	MATERIAL	PART NUMBER	PROFILE NO.
	9.00 +0.2/-0.0	41.50 +0.5/-0.0	31.00 +0.0/-0.2	1" FIG.602/1002/1502	NITRILE/VITON	5000904(STD) 5001004(SOUR)	
	9.00 +0.2/-0.0	56.50 +0.5/-0.0	46.00 +0.0/-0.2	1-1/4" & 1-1/2" FIG.602/1002/1502	NITRILE/VITON	50005104(STD) 50000514(SOUR)	
	13.50 +0.2/-0.0	68.40 +0.2/-0.0	54.80 +0.2/-0.2	2" FIG.602/1002/1502	NITRILE/VITON	50008104(STD) 50008204(SOUR)	
	13.20 +0.2/-0.0	102.0 +0.2/-0.0	81.50 +0.2/-0.2	3" FIG.602/1002/1502	NITRILE/VITON	50014904(STD) 50015004(SOUR)	
1	13.20 +0.2/-0.0	152.5 +0.2/-0.0	130.5 +0.2/-0.2	6" FIG.1004/1502	NITRILE/VITON	50063704(STD) 50063804(SOUR)	
2	12.04 +0.1/-0.0	101.3 +0.0/-0.04	79.00 +0.06/-0.06	3" & 4" FIG.2002/2202/2252	NITRILE/VITON	50016804-N1(STD) 50016804-V1(SOUR)	A
3	13.10 +0.1/-0.1	127.0 +0.1/-0.1	104.8 +0.1/-0.1	4" FIG.1502 & 5" FIG.1502/2002/2202	NITRILE/VITON	50019404-N(STD) 50019040-V(SOUR)	
4	13.50 +0.2/-0.0	128.0 +0.2/-0.0	102.5 +0.2/-0.2	4" FIG.602/1002 & 5" FIG.1004	NITRILE/VITON	50212905(STD) 50018904(SOUR)	B
5	9.10 +0.1/-0.0	46.20 +0.0/-0.04	35.20 +0.0/-0.04	2" FIG.2002/2202/2252 & 2-1/2" FIG.2252	VITON	50010204-V	

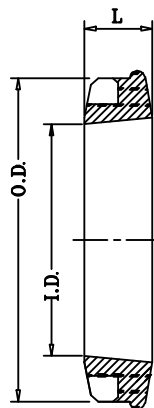
C

D

E



PROFILE 'D'



PROFILE 'E'

NITRILE: FOR STANDARD SERVICE

VITON: FOR SOUR SERVICE

NOTES:-

1. MATERIAL - **NITRILE**
2. SHORE HARDNESS FOR **STANDARD SERVICE:** 90 ± 5 SH A
3. MARK ON THE INSIDE WITH BLUE DOT FOR NITRILE (BUNA)
4. ALL DIMENSIONS ARE IN MM

NOTES:-

1. MATERIAL - **VITON**
2. SHORE HARDNESS FOR **SOUR SERVICE:** 90 ± 5 SH A
3. MARK ON THE INSIDE WITH GREEN DOT FOR VITON.
4. ALL DIMENSIONS ARE IN MM

R4				DATE: 04.10.19	DRAWN BY: J.S	MATERIAL: AS PER TABLE	TREATMENT:	American Completion Tools 3084 South I-35W Burleson, Texas 76028 Office: (817) 790-6608 Fax: (817) 783-8081
R3				APPROVED BY:	SCALE: NONE	HEAT TREAT:	VENDOR:	
R2				TOLERANCES UNLESS NOTED OTHERWISE DECIMAL ± .005, FRACTIONAL ± 1/64, ANGULAR ± 1/2° O-RING GROOVES REF EDM 225 ALL DIAMETERS CONCENTRIC WITHIN +/- .010 TIR BREAK SHARP EDGES 1/64 RADIUS FINISH MARK INDICATES POLISH FINISH 32 63 125 "CONFIDENTIAL INFORMATION DO NOT REPRODUCE"				
R1								
REV	DESCRIPTION	DATE	BY					

SEAL RING
HAMMER UNIONS